

2 YEAR WARRANTY ON ALL PRODUCTS!

PIRANHA P12 DUAL MK11

- Surface Mounted.
- Ultra powerful class leading 6200 Fixture Lumens.
- 2 models to choose from, single colour or Dual Colour.
- Ultra compact low profile design, suitable for transom and side mounting on all hull types.
- Simple installation just one small cable entry hole and 3 mounting screws.
- Built in driver technology with active thermal rollback.
- Suitable for in and out of water use.
- 60 degree beam.
- Aluminium option available.
- Control via Bluefin Switch or I.Y.S Control system for MFD/ Mobile device.



PIRANHA	P12 DUAL MK11
Colours:	
Boat Size:	up to 20m/65ft
Lumen Output:	6200
Current:	12V 4.6A; 24V 2.35A



PIRANHA P24R, P24 DUAL, P24 CC

- Surface Mounted.
- Top of the range with an incredible 10,600 Fixture Lumens, nothing comes close to the power of the P24R.
- 3 models to choose from, single colour, Dual Colour or RGBW colour change.
- Ultra compact low profile design, suitable for transom and side mounting on all hull types.
- Simple installation just one small cable entry hole and 3 mounting screws.
- Built in driver technology with active thermal rollback.
- Suitable for in and out of water use.
- Control via Bluefin Switch or I.Y.S Control system for MFD/Mobile device.

PIRANHA	P24R, P24 DUAL, P24 CC
Colours:	
Boat Size:	30m/105ft
Lumen Output:	10600
Current:	12V 10.0A; 24V 5.0A

SUPERYACHT ELITE SERIES

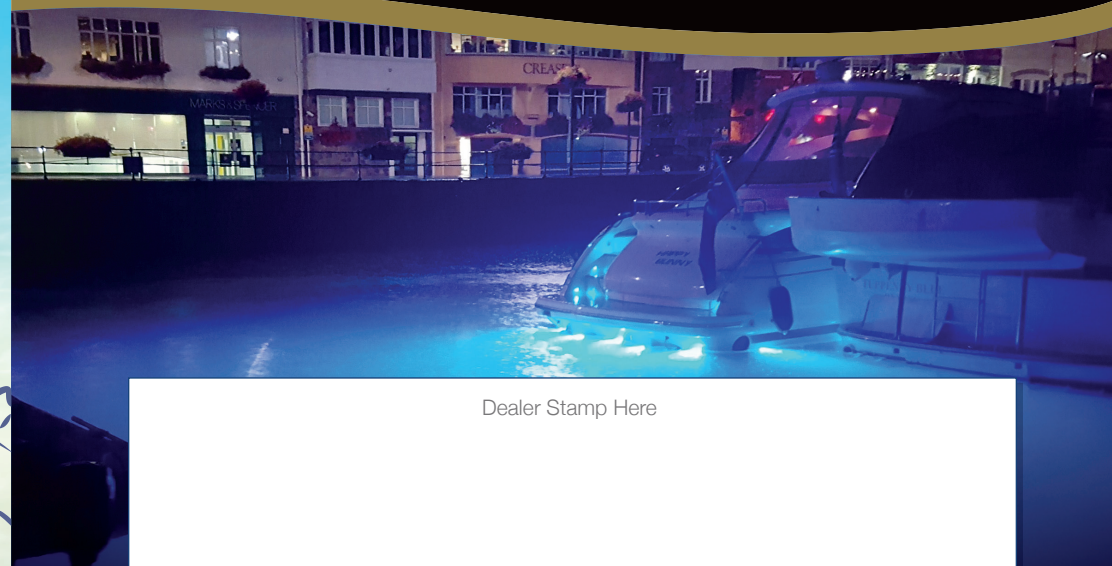
Bluefin LED

ELITE SERIES SY48R-VA, SY48R-FF

- The Bluefin Elite Superyacht SY48R FF series boasts the highest fixture lumen light output currently available on the market.
- Variable angle 0-45 degree weld in section for either Steel or Aluminium hulls.
- Flush fit weld in section for either Steel or Aluminium hulls.
- The LED cartridge can be serviced or upgraded from inside the hull eliminating the need to haul the vessel.
- Available in White, Blue or RGBW Colour Change which can be controlled via our Intelligent Yacht System. Alternatively the lights can be integrated into the yachts existing DMX control system.
- Ice Class compatible.
- Fully customisable.
- Model also available for Fuel/Water tanks.



SUPERYACHT ELITE SERIES	SY48R-VA	SY48R-FF
Colours:		
Boat Size:	up to 30m/105ft+	up to 30m/105ft+
Lumen Output:	26000	26000
Current:	110V AC 2.3A / 240V AC 1.1A	110V AC 2.3A / 240V AC 1.1A



Dealer Stamp Here

For more information, give us a call on +44 (0) 1827 880450 or visit www.BluefinLED.com

PIRANHA SERIES

PIRANHA P3 MK11

- Surface mounted.
- Class leading 1550 fixture lumens.
- Compact & low profile suitable for all hull types.
- Simple 2 wire installation, small cable entry hole.
- Internal driver with thermal trip.
- 60 degree beam.
- Aluminium option available.
- Control via Bluefin Switch or I.Y.S Control system for MFD/ Mobile device.

PIRANHA	P3 MK11
Colours:	
Boat Size:	up to 7m/25ft
Lumen Output:	1550
Current:	12V 1.2A

PIRANHA P6 NITRO MK11

- Surface Mounted.
- Hi power low profile compact design.
- Built in driver technology with active thermal rollback.
- Suitable for in and out of water use.
- 60 degree beam.
- Aluminium option available.
- Class leading 3500 Fixture lumens
- Control via Bluefin Switch or I.Y.S Control system for MFD/ Mobile device.

PIRANHA P6 CC MK11

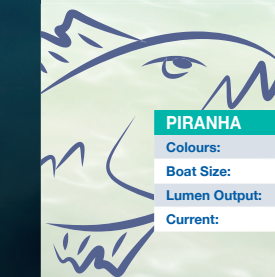
- Surface Mounted.
- Almost infinite colour combinations available.
- Suitable for all types of boats, perfect for transom and side mounting on all hull types.
- Built in driver technology with active thermal rollback.
- Suitable for use in and out of water use.
- 60 degree beam.
- Aluminium option available.



PIRANHA	P6 NITRO MK11	P6 CC MK11
Colours:		
Boat Size:	14m/45ft	up to 14m/45ft
Lumen Output:	3500	2700
Current:	12V 3.5A; 24V 1.8A	24V 2.0A; 12V 4.0A

QUALITY • RELIABILITY • PERFORMANCE

Bluefin LED
Underwater Lighting



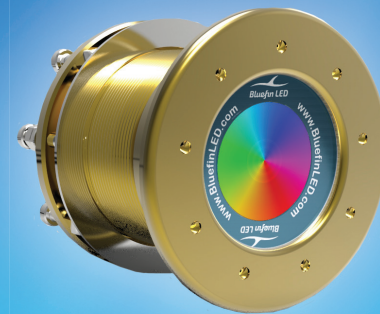
Signature SERIES



ORCA OR20 & OR48 CC

- Surface mounted.
- The most powerful surface mounted Underwater LED lights available.
- 2 models to choose from, Single colour or RGBW Colour Change model with control via our I.Y.S control system for MFD/Mobile devices.
- A radical departure from conventional sealing methods the Orca has an unique rear cassette design with multiple sealing systems.
- Machined from Billet AB2 Marine grade Bronze.
- Suitable for Transom mounting on all hull types.
- Built in driver technology with active thermal rollback.

ORCA	O20	O48 CC
Colours:		
Boat Size:	up to 30m/105ft+	up to 30m/105ft+
Lumen Output:	14500	12000
Current:	24V 5.1A	24V 6.5A (external driver)



MAKO M12 & M24 CC

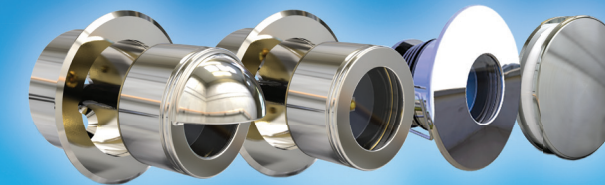
- Thru Hull Interchangeable.
- Unrivalled performance with almost unlimited mounting options thanks to the low profile bezel and compact body. Thru Hull fixing provides a safe & secure fixing with the added benefit of a removable LED cartridge that can be serviced or upgraded from inside the hull eliminating the need to haul the boat.
- M24 CC model has almost Endless Colour combinations to choose from, lights can be cycled, strobed, dimmed or beat to the sound of your music with our unique "sound to light feature" controlled via our I.Y.S control system for MFD/Mobile devices.
- Suitable for transom, side and under hull mounting on all hull types.

MAKO	M12	M24 CC
Colours:		
Boat Size:	up to 20m/65ft	up to 20m/65ft
Lumen Output:	6300	6500
Current:	12V 5.1A; 24V 2.6A	12V 5.1A; 24V 2.6A (external driver)

INTERIOR / EXTERIOR LIGHTING

COURTESY LIGHTING

- All 316L Polished Stainless Steel patented construction IP66 Protection.
- Powerful 1.2w Output
- Available in satin or polished finishes.
- Fully Dimmable.
- Various colours available Warm White 3000k, Cool White 6500k, Blue or RGBW.
- Control via Bluefin Switch or I.Y.S Control system for MFD/Mobile device.



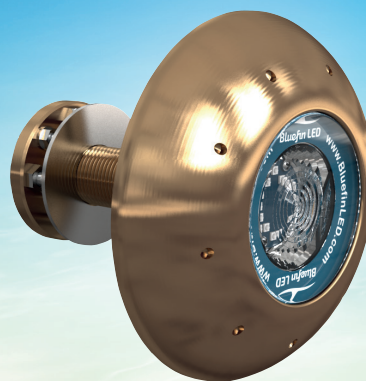
COURTESY LIGHTING	EYELID, HEADLINER, SLOTTED, DOUBLE SLOTTED, SPRING
Colours:	
Lumen Output:	-
Current:	01.A

PATHWAY LIGHTS

- All 316L Polished Stainless Steel patented construction IP66 Protection.
- 600 Lumen Flat beam output.
- Available in most colour combinations to suit the installation.
- Voltage 12v AC/DC.
- Compact Design 100 x 19mm.



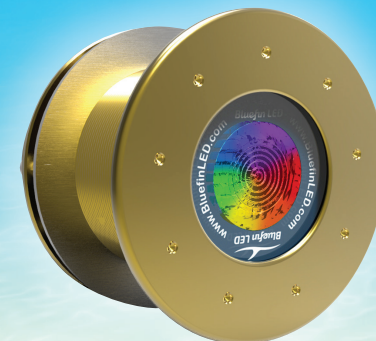
PATHWAY LIGHTS	
Colours:	
Lumen Output:	600
Current:	12V 500Ma



MANTA RAY MR20 & MR48 CC

- Thru-hull.
- Formidable performance with the added security of a thru-hull stem fitting.
- 2 models to choose from, Single colour or RGBW Colour Change model with control via our I.Y.S control system for MFD/Mobile devices.
- A radical departure from conventional sealing methods the Manta Ray has an unique rear cassette with multiple sealing system.
- Machined from Billet AB2 Marine grade Bronze.
- Suitable for Transom mounting on all hull types.
- Built in driver technology with active thermal rollback.

MANTA RAY	MR20	MR48 CC
Colours:		
Boat Size:	up to 30m/105ft+	up to 30m/105ft+
Lumen Output:	14500	12000
Current:	24V 5.1A	24V 6.5A (external driver)



GREAT WHITE GW20 & GW48 CC

- Thru-hull Interchangeable.
- Top of the range Great White Underwater Lights offers almost unlimited mounting options thanks to an ultra low profile bezel and compact body.
- Thru Hull mounting offers secure fixing with the additional benefit of a removable LED cartridge which can be serviced from inside the hull, eliminating the need to haul.
- Suitable for Transom and side mounting on all hull types.
- GW48 CC model has almost Endless Colour combinations to choose from, lights can be cycled, strobed, dimmed or beat to the sound of your music with our unique "sound to light feature" controlled via our I.Y.S control system for MFD/Mobile devices.

GREAT WHITE	GW20	GW48 CC
Colours:		
Boat Size:	up to 30m/105ft+	up to 30m/105ft+
Lumen Output:	14500	up to 12000
Current:	24V 5.1A	24V 6.5A (external driver)

FIREFLY LIGHTS

- All 316L Polished Stainless Steel patented construction IP66 Protection.
- Powerful 1000 Lumen 95 Degree Beam Angle.
- Voltage 9 - 32v.
- Compact design 120 x 55 x 19mm.
- Control via Bluefin Switch or I.Y.S Control system for MFD/Mobile device.



FIREFLY LIGHTS	FB BRACKET, FR FLUSH, FF SURFACE
Colours:	
Lumen Output:	1000
Current:	12V 1A; 24V 500Ma

DOCK LIGHTING

- High impact Optical grade Polymer lens with AB2 Bronze base and polymer puck.
- 3200 / 5700 Fixture Lumens with 60 Degree beam angle.
- Various colours available White, Blue, Green or RGBW.
- Voltage 24v.
- Fully protected with over voltage/current, Reverse polarity, Thermal protection and soft start.
- Factory fitted 7mtr power lead and installation kit.
- Control via Bluefin Switch or I.Y.S Control system for MFD/Mobile device.



DOCK LIGHTS	DL6D	DL6D CC	DL12D
Colours:			
Lumen Output:	3200	2700	5700
Current:	24V 1.0A	24V 2.0A	24V 2.35A